

# What We Heard Report

## Park Design Workshop

Held on February 9, 2026

---

Parkline | 2501 Richmond Road



**Prepared by:**

groundcubed  
Suite 25, 6020 2nd Street SE  
Calgary, AB T2H 2L8

**Date:**

April 6, 2026





# CONTENTS

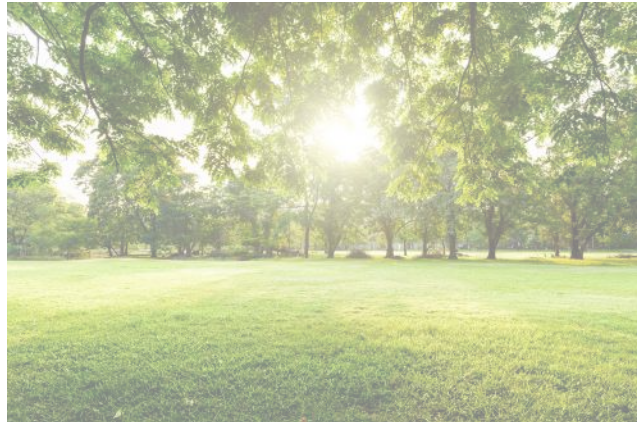
---

01 What We Did	1
02 What We Heard	4
03 What's Next	5

## APPENDICES

Appendix A: Presentation Materials

Appendix B: Verbatim Responses - Break-out Session



# 01 What We Did

---

In late 2025, Minto Group began planning an engagement event with interested community members to review a design concept for a new public park that will be constructed through the redevelopment of the Viscount Bennett school site, now referred to as Parkline--a new community within the neighbourhood of Richmond in southwest Calgary.

This report outlines the purpose of the workshop, what we did during this session, the outcomes, and what comes next.

## PURPOSE OF THE WORKSHOP

The purpose of the Park Design Workshop was twofold:

1. To present the current park design including the factors influencing design, the proposed program elements and the rationale for selecting these elements and placing them on the site.
2. To encourage discussion in small groups and solicit feedback from participants on what they like and dislike about the park concept and why, and to identify ideas for changes to the current park design.

## EVENT DETAILS

Date:	February 9, 2026
Time:	6:30pm to 8:00pm
Location:	Richmond Knob Hill Community Association (2433 26 Avenue SW)
No. of Participants:	±18 (excluding representatives from Minto and their consulting team)

## AGENDA

### 1. Introductions + Update from Minto

- Introduce the project team, and provide participants with an update on the development project.

### 2. Proposed Park Design

- Presentation on the proposed park design (description of design rationale, program elements, what can change and what is fixed)

### 3. Ideas for Change (Break-out Session)

- Small group discussion on what participants like and dislike about the current park design, and ideas for changes to the current design with a focus on the type of activities and amenities in the park, and where they should be located within the established park boundary.
- Report back to the larger group – review and discuss the outcomes from the small group conversations/activity.

### 4. Next Steps

- Description of next steps and address questions about the outcomes and/or what happens next.

## WHO WE ENGAGED

Discussions with the Richmond Knob Hill Community Association in late 2025 prompted Minto to plan a workshop with interested community members. It was clear from discussions with the Community Association that there was interest in learning about the progress of development and the public park in particular. As a result, in January 2026, Minto sent invitations to several community members who had expressed interest in staying involved in the development process. The invitation was to participate in an in-person workshop focused on the design of the public park. While initial input on potential park amenities was obtained during the land use redesignation and outline plan application process, this workshop would focus on the park itself in the location that was established through the land use amendment that was approved by City Council on April 11, 2025.

As noted earlier in this report, the purpose of the workshop was to present the proposed park design and solicit feedback on the activities and amenities identified in the current design concept prior to submitting park design drawings to the City of Calgary for their review and comment as part of the subdivision process.

The invitation for the workshop was sent to 338 email addresses and provided to the Community Association to circulate via their email list. The workshop invitation was also posted on Minto's website to ensure a wide audience was afforded the opportunity to participate. Ultimately, approximately 18 people expressed an interest in participating in the Park Design Workshop on February 9th.

## WHAT WE DID

The workshop was structured in two (2) parts. The first part involved a presentation by Minto and their consulting team followed by the main event which was a break-out session to encourage small group discussions. The presentation component of the session was intended to be brief. It began with introductions and an update on the project from Minto followed by a brief presentation from the consulting team on the proposed park design. The park design presentation focused on the proposed amenities and activities that could take place in the park, and the rationale for the layout of these amenities within the park boundaries. The presentation also addressed design considerations due to the physical constraints of the site as well as the City of Calgary's expectations and requirements relative to public park design since the park will be owned, operated and maintained by the City as part of their city-wide park inventory.

To prompt discussion during the break-out sessions, a large sheet of paper was provided to each group which included a rendering of the proposed park along with two questions:

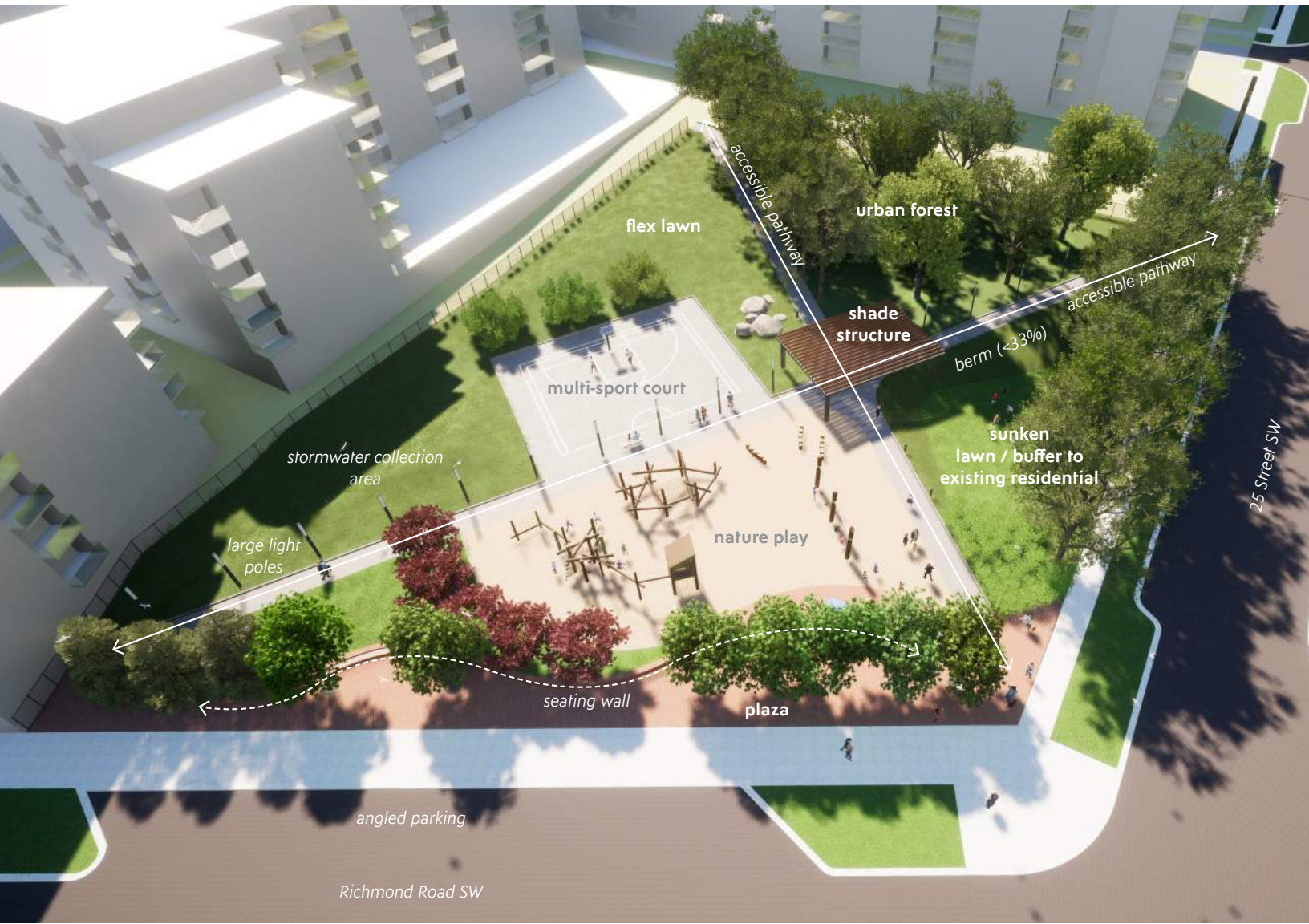
- What elements of the park do you like?
- What elements of the park do you dislike, and why?

Participants were asked to write on the paper or use sticky notes to document their thoughts and outcomes of the discussion. Minto and members of their consulting team were present in each group to facilitate conversations and to answer questions.

The workshop concluded with a brief overview of the key take-aways from each group and a description of the next steps and how the outcomes of the workshop may inform revisions to the park design.

Refer to **Appendix A** for images of the materials available during the session, and **Appendix B** for the verbatim responses from participants that were documented during the session.

**PARKLINE**  
**Proposed Park Plan**



## 02 What We Heard

Common themes that emerged from the workshop are summarized below. Refer to **Appendix B** for a list of all the comments verbatim collected at the workshop.

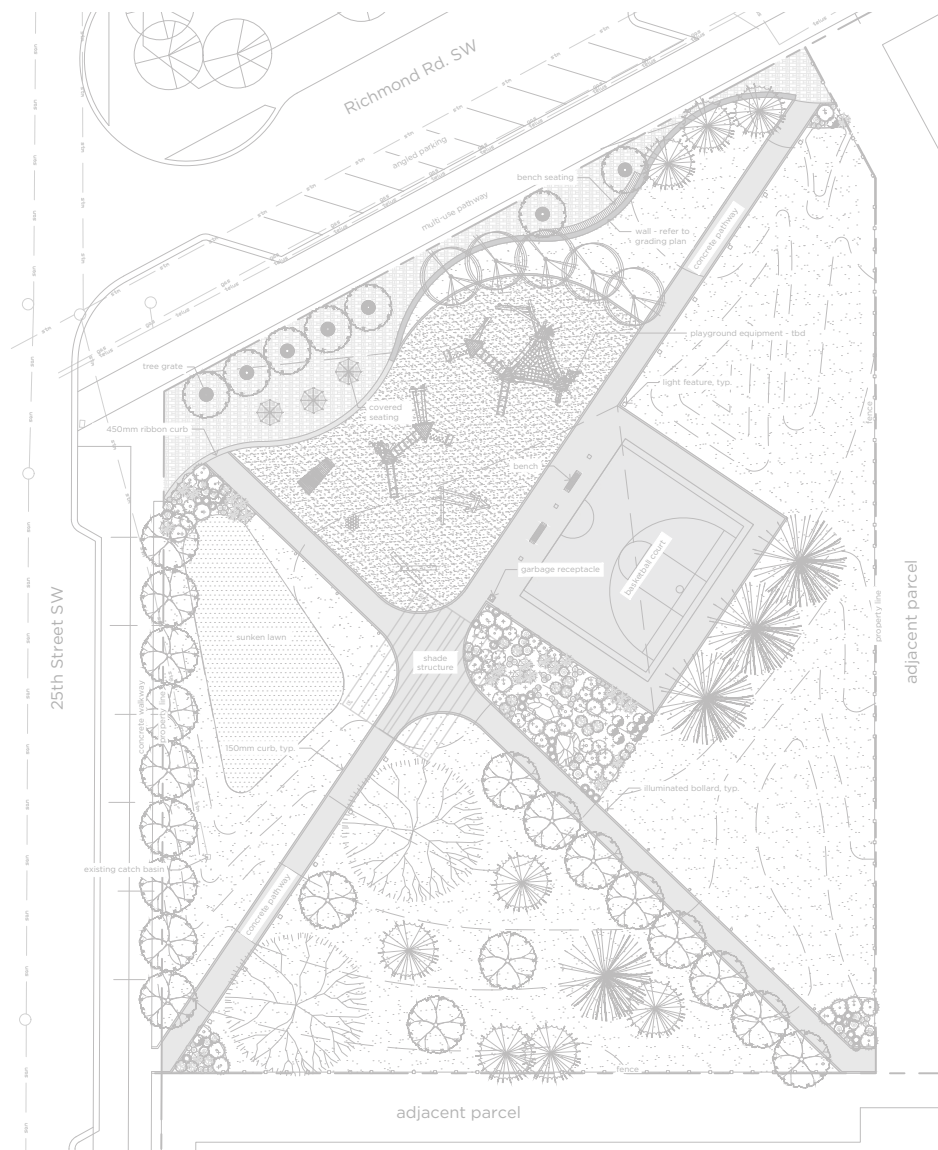
THEME AREA	LIKES	DISLIKES / OTHER CONSIDERATIONS
<b>Trees</b>	<ul style="list-style-type: none"> <li>trees</li> </ul>	<ul style="list-style-type: none"> <li>use large caliper trees</li> <li>high canopy trees vs. shrubs</li> </ul>
<b>Seating</b>	<ul style="list-style-type: none"> <li>seating wall</li> </ul>	<ul style="list-style-type: none"> <li>more seating</li> <li>ensure sufficient seating in the park, especially given the additional population resulting from new development</li> </ul>
<b>Size of Park</b>		<ul style="list-style-type: none"> <li>the number of activities shown in the plan may be too much for the size of the park (sometimes less is more)</li> <li>the park is too small for the no. of people in the area</li> <li>open space area is too small</li> </ul>
<b>Play Structures</b>	<ul style="list-style-type: none"> <li>location of the playground - like that it's near higher density buildings and setback from the street</li> </ul>	<ul style="list-style-type: none"> <li>consider a climbing wall/structure in playground</li> <li>rubber surface</li> </ul>
<b>Safety</b>	<ul style="list-style-type: none"> <li>lighting along the pathway helps people feel safe</li> </ul>	<ul style="list-style-type: none"> <li>more traffic will negatively impact the safety of park users, and pedestrians in general</li> <li>too dangerous to throw frisbees</li> <li>ensure clear sightlines in urban forest</li> </ul>
<b>Sports Court</b>	<ul style="list-style-type: none"> <li>like the idea of hard surface area for outdoor events</li> <li>like the connection of the sports court to the playground</li> </ul>	<ul style="list-style-type: none"> <li>too small to be functional</li> <li>include a vertical surface for individual play (like a tennis backboard)</li> <li>circular 3-on-3 court</li> </ul>
<b>Lighting</b>	<ul style="list-style-type: none"> <li>pathway lighting</li> </ul>	<ul style="list-style-type: none"> <li>light bollards with outlets for market or community events/vendors</li> </ul>
<b>Other Features</b>		<ul style="list-style-type: none"> <li>enclosed dog area</li> <li>dog relief area at the edges to avoid dead grass; maybe mulch</li> <li>water fountain for humans and dogs</li> <li>create a better sense of arrival; pay homage to the site's original use</li> <li>picnic tables</li> <li>include (angled) parking on 25 Street?</li> <li>pedestrian signal lights at the intersection to make crossing easier</li> <li>enhanced maintenance, not City standard is preferred</li> </ul>

## 03 What's Next

It was important for Minto's project team to articulate to participants how the feedback received through the workshop could influence the park design that will be submitted to the City of Calgary for their review and approval as part of the next phase of development. The next steps communicated to participants are as follows.

Minto and their consultants will:

- Review and document the feedback received on the park design;
- Revisit the current park design based on feedback;
- Provide a summary to participants of what we heard in the session;
- Continue to provide updates on the status of the overall redevelopment project on their website; and
- Submit the park design concept to the City of Calgary for their review and comment, likely at the time of subdivision.

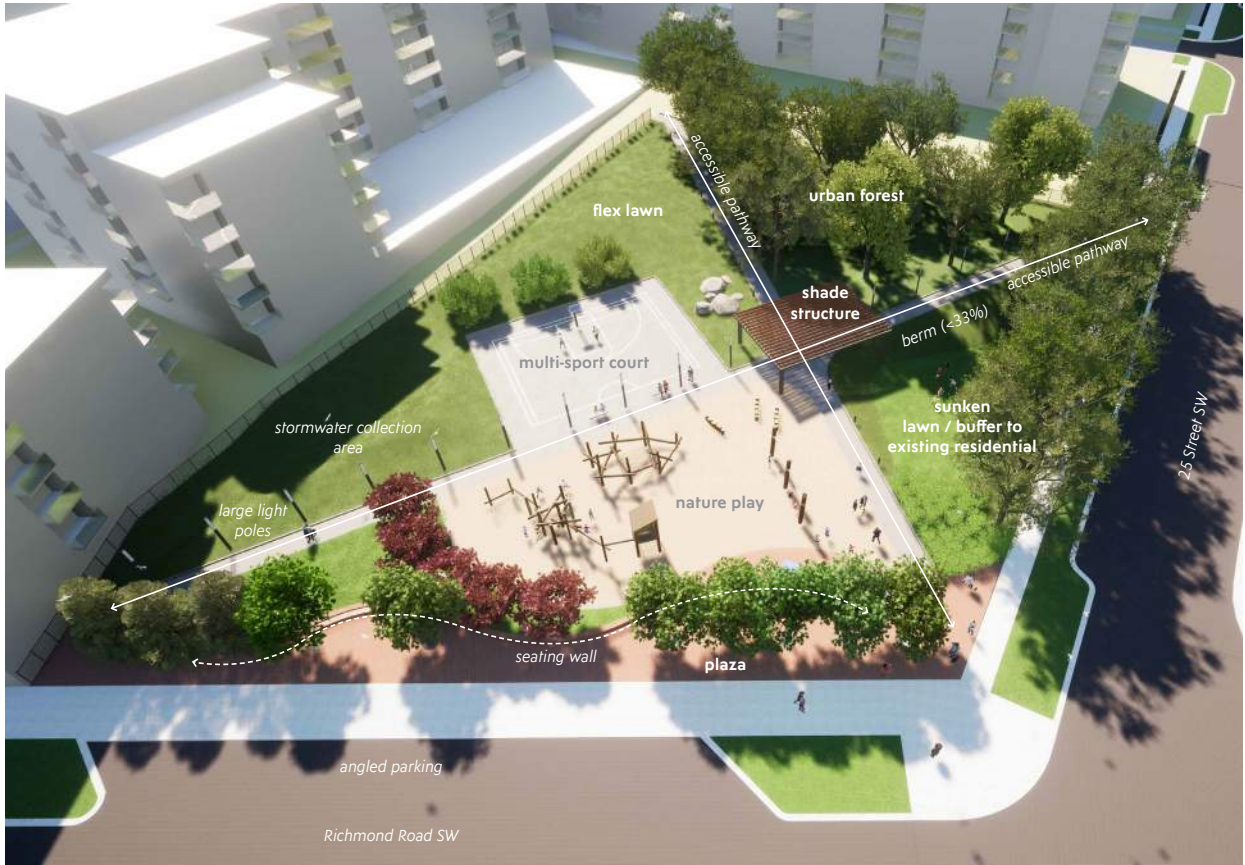


\*\* page intentionally left blank \*\*

**APPENDIX A**  
PRESENTATION MATERIALS

---

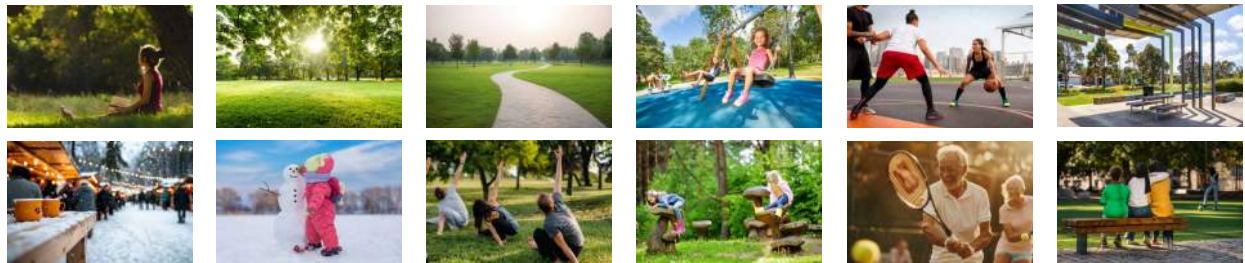
# PARKLINE Proposed Park Plan



What elements of the park do you like?

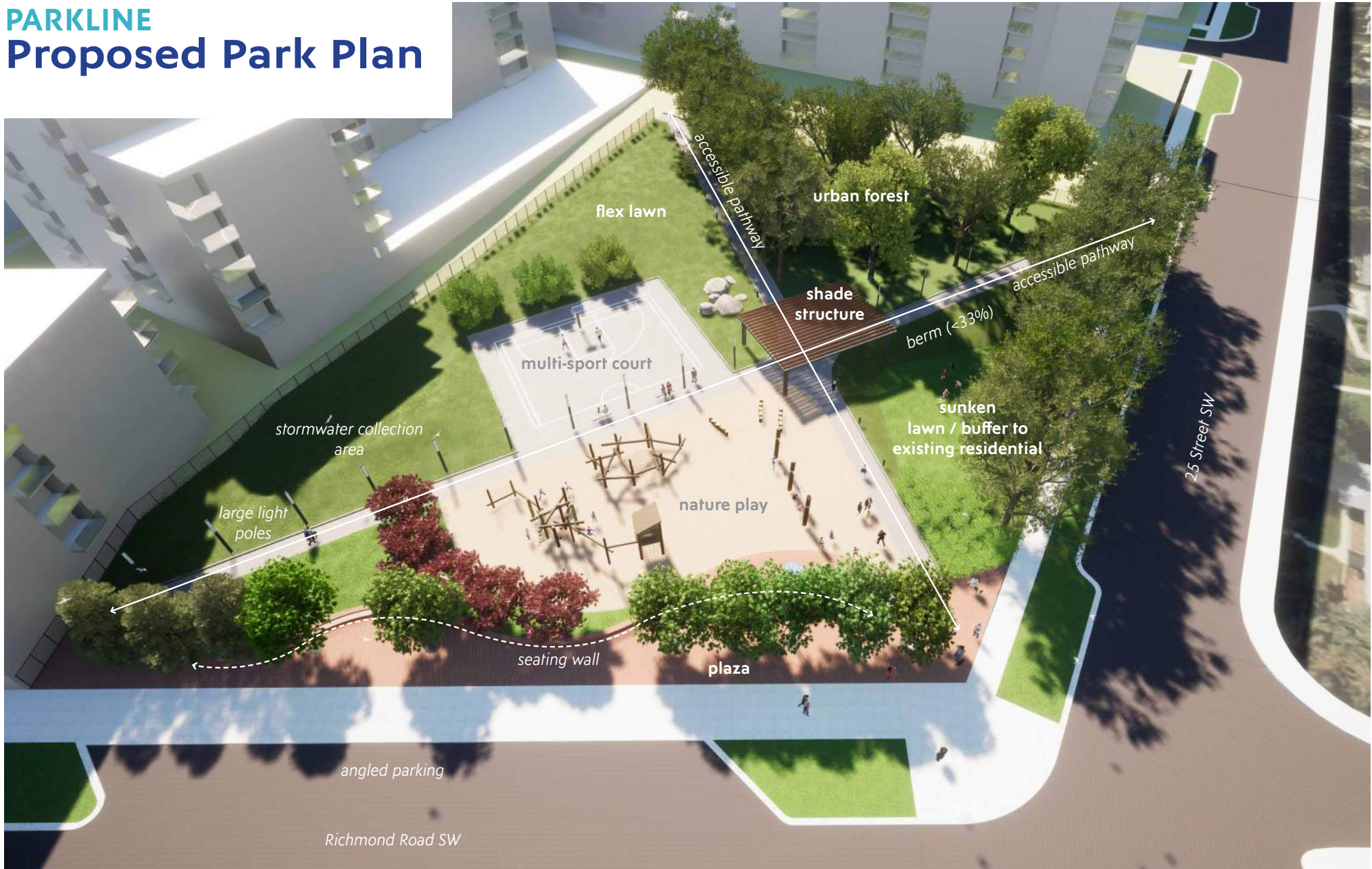
What elements of the park do you dislike, and why?

## Reference Images





# PARKLINE Proposed Park Plan



**APPENDIX B**  
VERBATIM RESPONSES

---

# Appendix B: Verbatim Responses

## Q#1: What elements of the park do you like?

- Like the trees. Climbing wall perhaps, barbeque + picnic tables
- Public art/mural on faces of buildings fronting the park
- Logs/boulders natural play objects for in the tree areas
- Large caliper trees! Don't be stingy
- High canopy trees (instead of bushes)
- Light bollards w/ outlets for market or community events/vendors?
- Rubber play surface with wood playground structures
- Angled parking on Richmond Road; Can some be included on 25 Street?; Seating wall
- Playground and multi-use area near the other higher density buildings (so current area seems good)
- Separation of playground from road
- I like the connection of playground to court; I like the bench seating wall + would like to see it face N and S on the seating wall; I like the overall concepts but wonder if it is too much for the park space.

## Q#2: What elements of the park do you dislike, and why?

- 1 acre is too small for this development
- Pedestrian signal lights at the intersection to make crossing easier
- No name?; No "Arrival" pillar or podium?; Sense of history
- Open space too small; Not big enough to throw a frisbee; Need more open space.
- Basketball court too small; Why have ½ a court?
- Rubber surfacing in playground

# Appendix B: Verbatim Responses (con't)

## Other Comments:

- Water fountain for humans and dogs (like in Marda Loop) Can some (parking) be included on 25th Street
- There should be a dog relief area at the edges to avoid dead grass; maybe mulch?
- Ideas: picnic tables, visual safety in urban forest area, an enclosed dog area for existing but especially for new people in development; using vertical surfaces around sports court so they can be used for different activities like a ball wall (tennis) or a soccer net.
- Additional seating for retail-adjacent use? "Coffee at the park" (or under shade structure)
- Enhanced maintenance - either prop tax funded or not, but not regular City maintenance
- Homage to Viscount
- Traffic issue; Winter ice etc.
- Multi-use sports court - What else is here other than bball? What is the size? Probably too small for a bball court+ other activities
- How many benches or seating is there in the park? Enough for people in 1,400 units? (3000 people)
- Because of the slope of the site + where the park is located with the buildings on the east + south sides of the park, it will be shadowed constantly.
- Lighting/ safety is important
- Proceeding with development while looking interest to sell
- DP submit comments on DR#3
- No engagement required for park space/ design
- Summer 2027 park
- Minto not senior housing [Builder?] - Other partners can provide different housing options
- City owned/ maintenance of park - Min/max standards form the city
- Relax, social connection, passive/ active
- Safe pathways, accessible/ inclusive
- Can't throw a frisbee
- Pathways are fixed to a standard
- Playground